



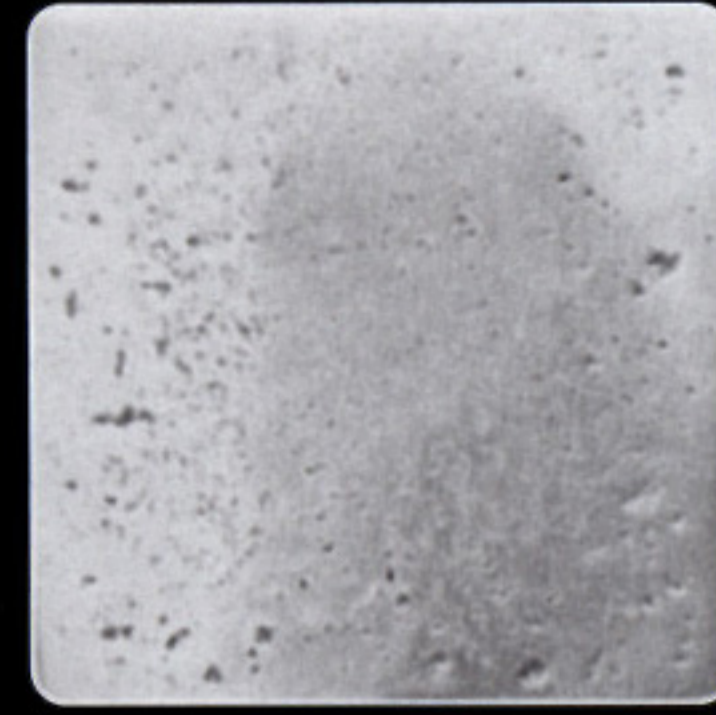
SP01 (w/ back posts)



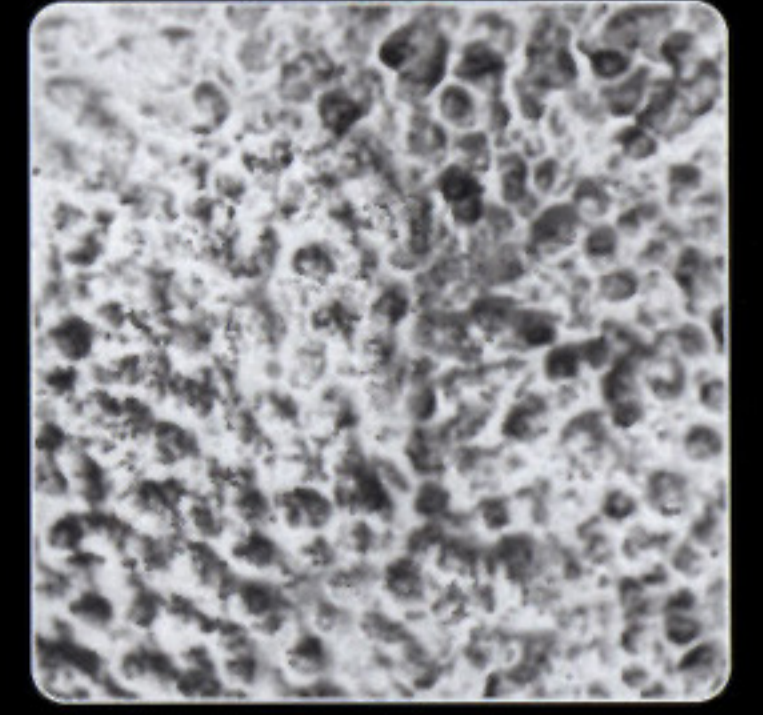
AA06



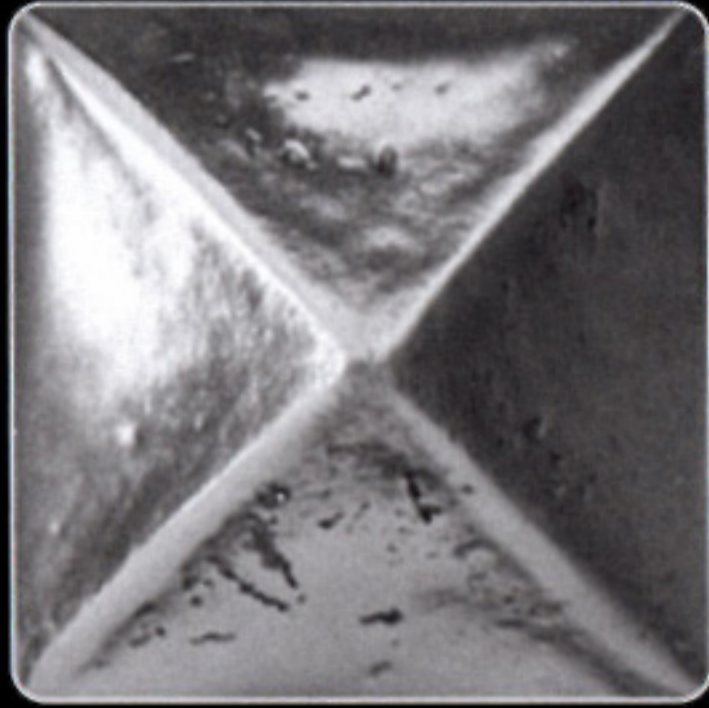
AA07



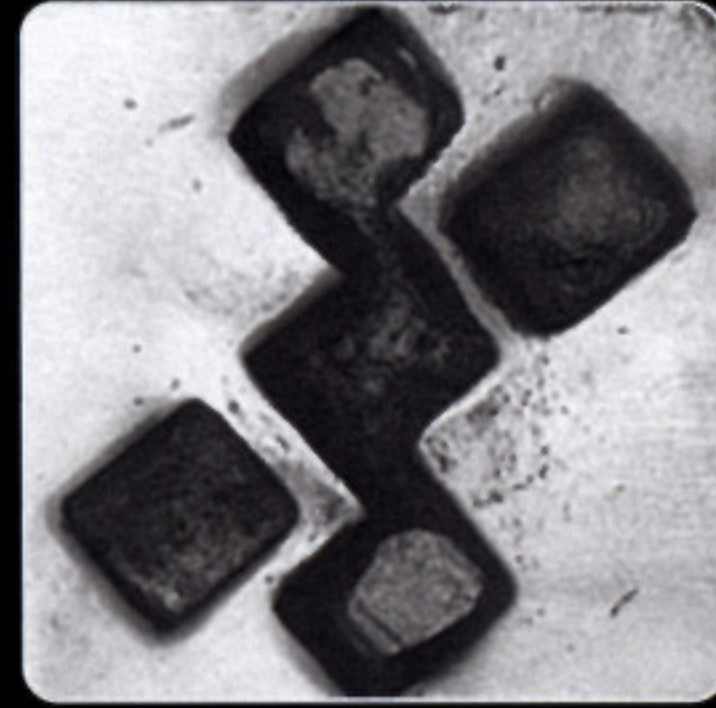
PL01



TE01



EX01 (1" x .75" h)



AF01



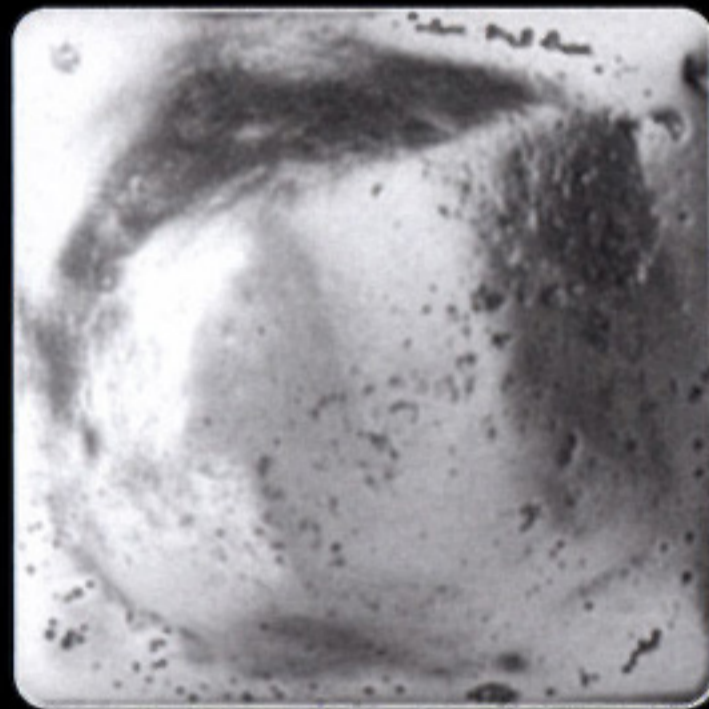
PA17



AA08



AA09



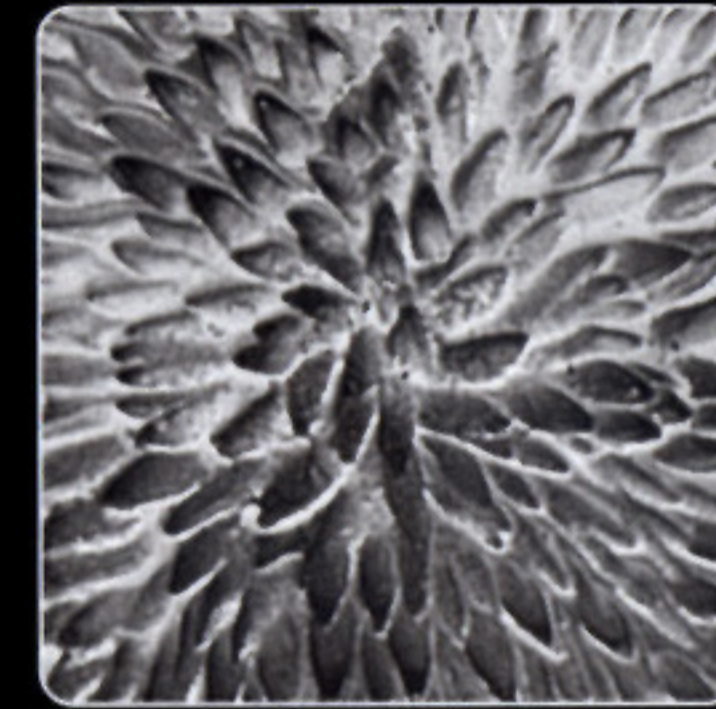
EX02 (1" x .5" h)



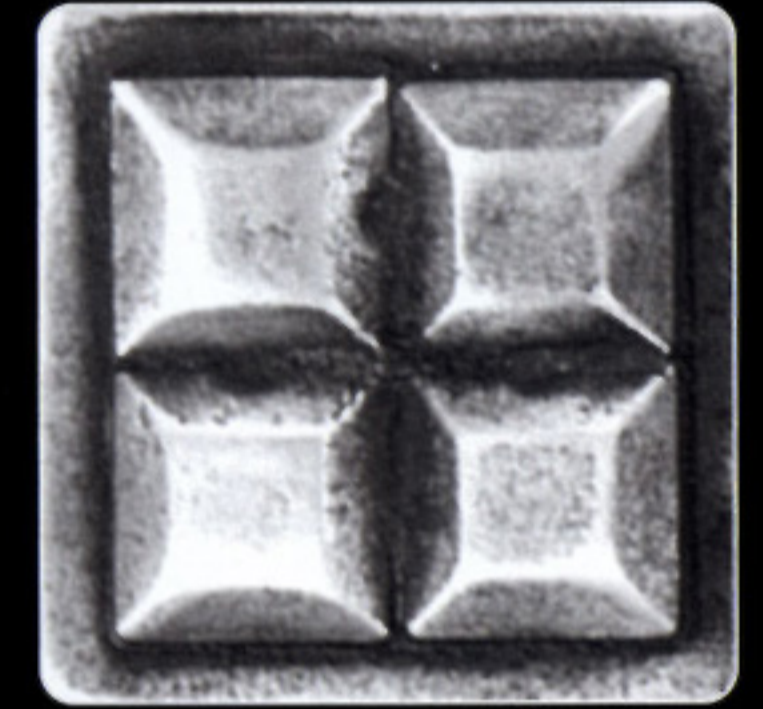
AF02



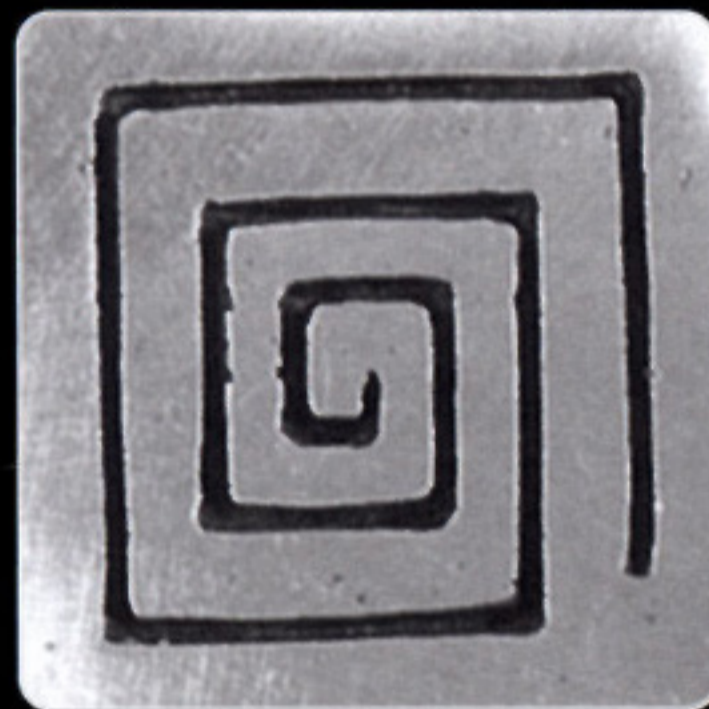
PA18



DE03



PA14



EX03



AF03



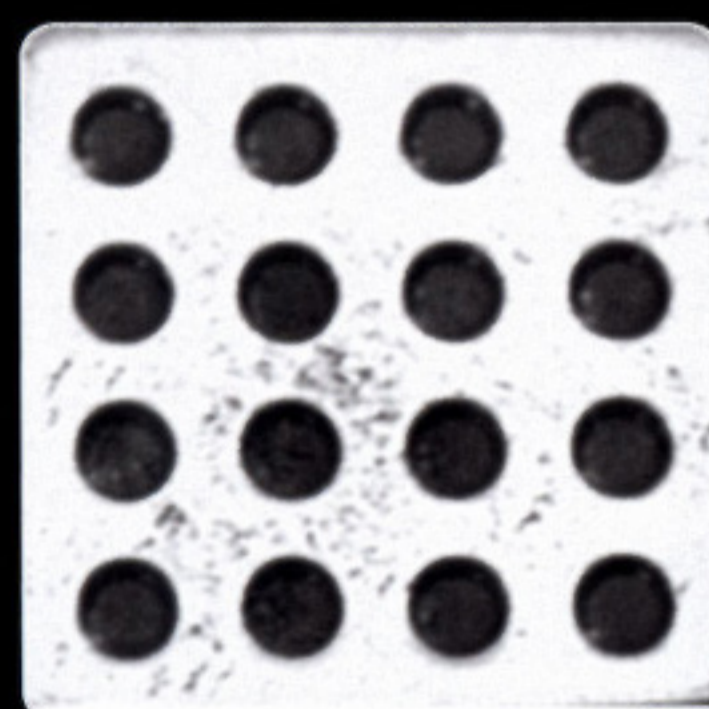
AF04



AF05



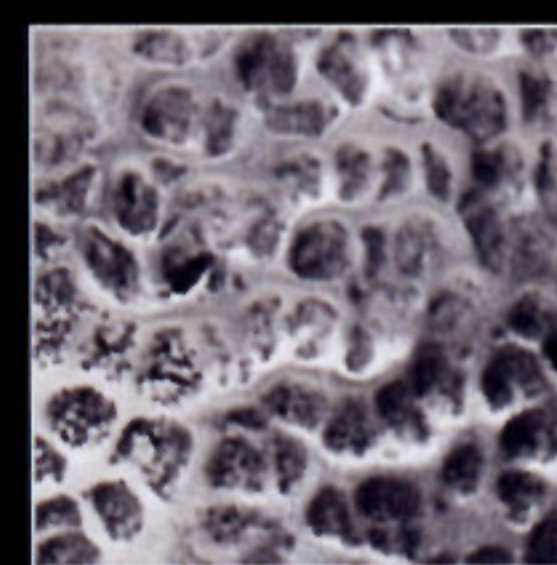
DE21



DE19

STANDARD PEWTER FINISHES (F104 – F107)

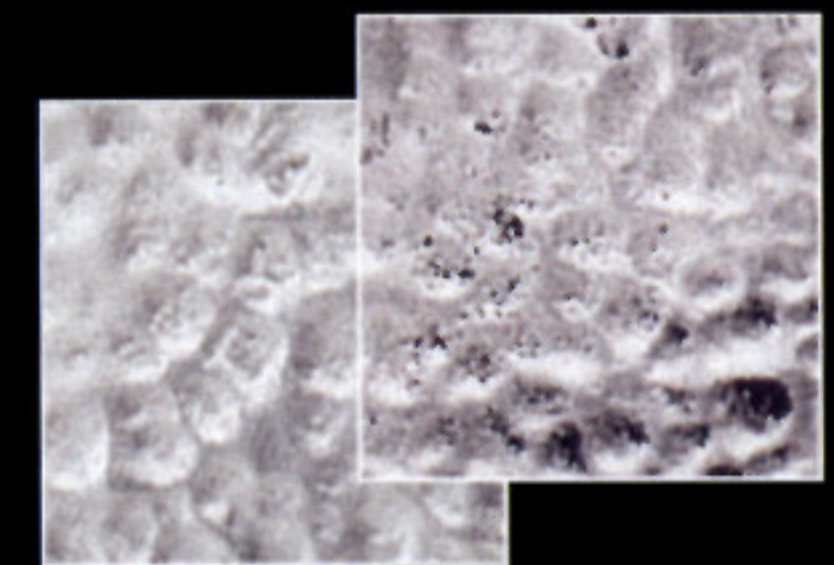
Satin is the standard pewter finish. Mirror and Sanded finishes are also available at no additional cost. Subtle variations in color may occur.



F105 SATIN

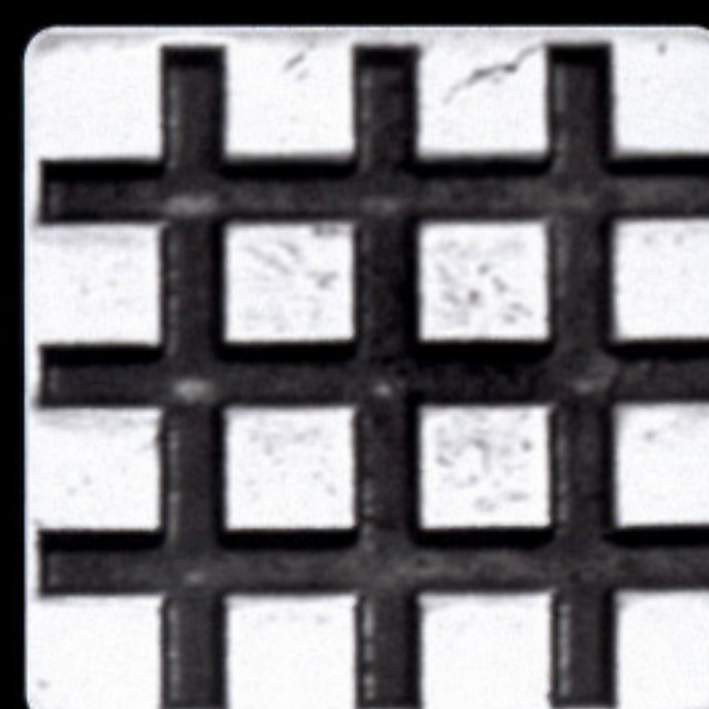


F107 MIRROR



F106 SANDED

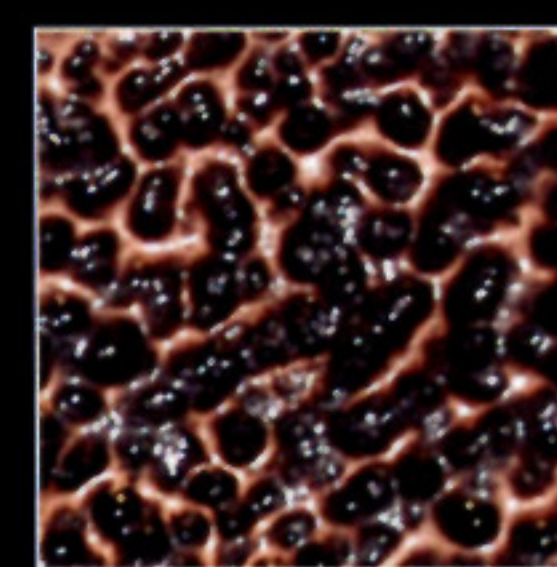
F104 2 TONE/SANDED



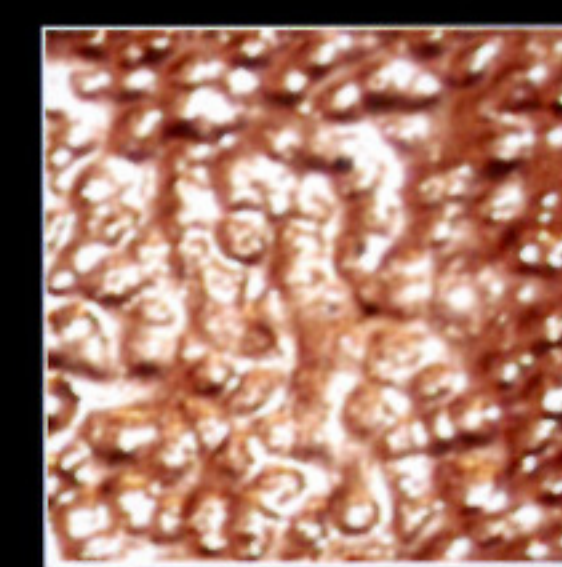
DE20

PLATED PEWTER FINISHES (F108 – F109)

Plated finishes require additional lead time and are an additional cost. They are NOT recommended for floors. Subtle variations in color may occur.



F108 ANTIQUE COPPER



F109 BRIGHT COPPER

