



NB01



NB02



PA05



NB06



(low pyramid) EX01



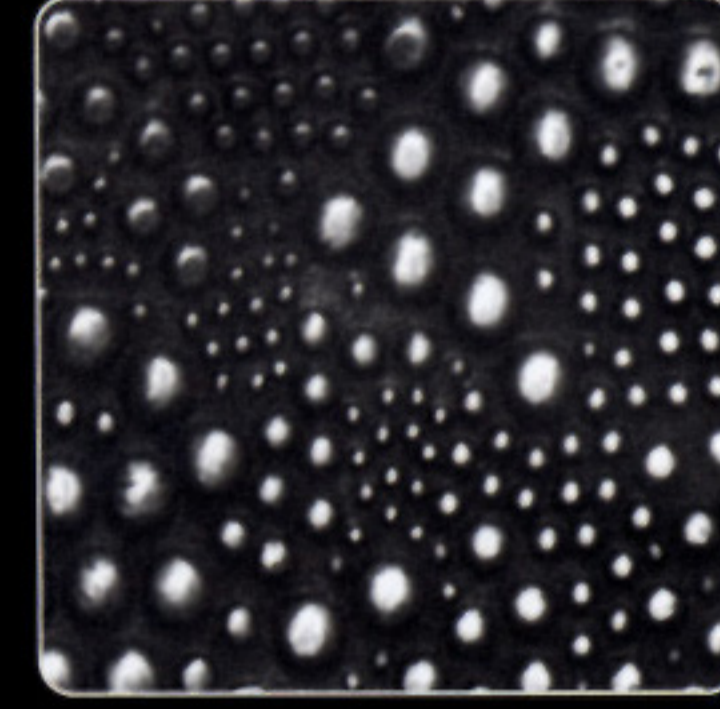
NB03



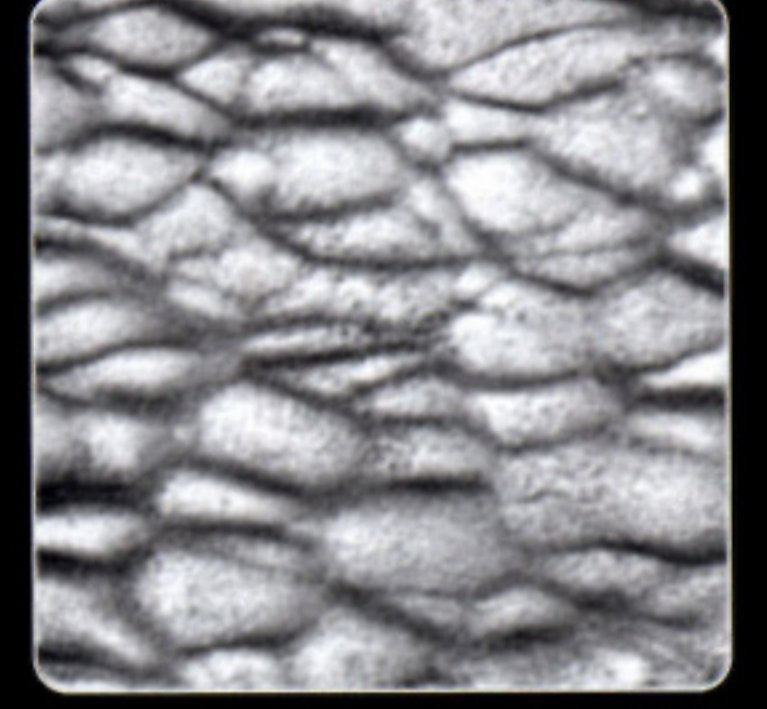
NB04



DE09



DE10



DE12



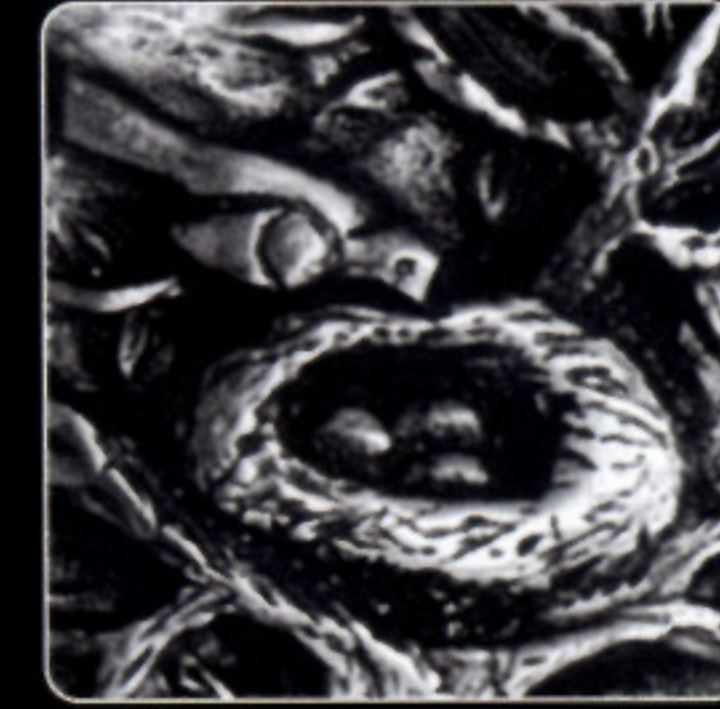
KT01



KT02



KT03



KT04



KT05



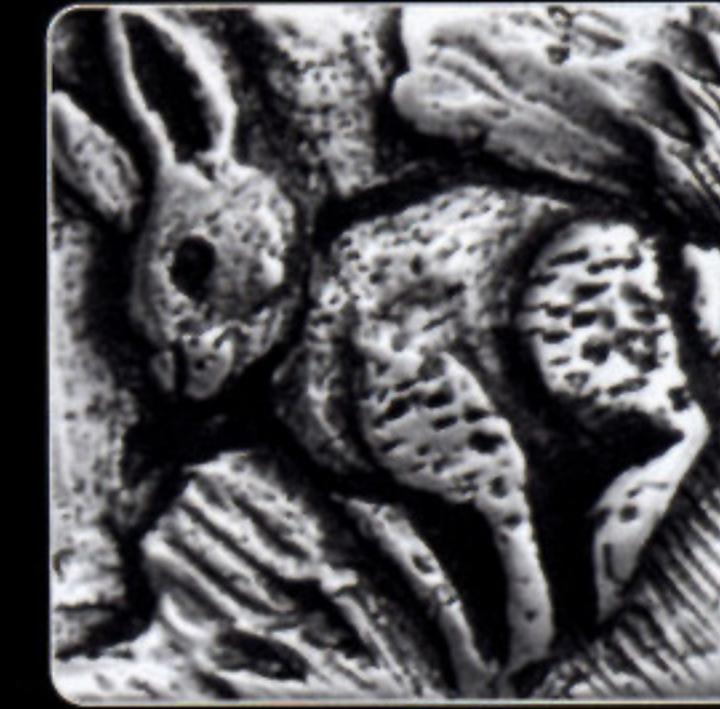
KT06



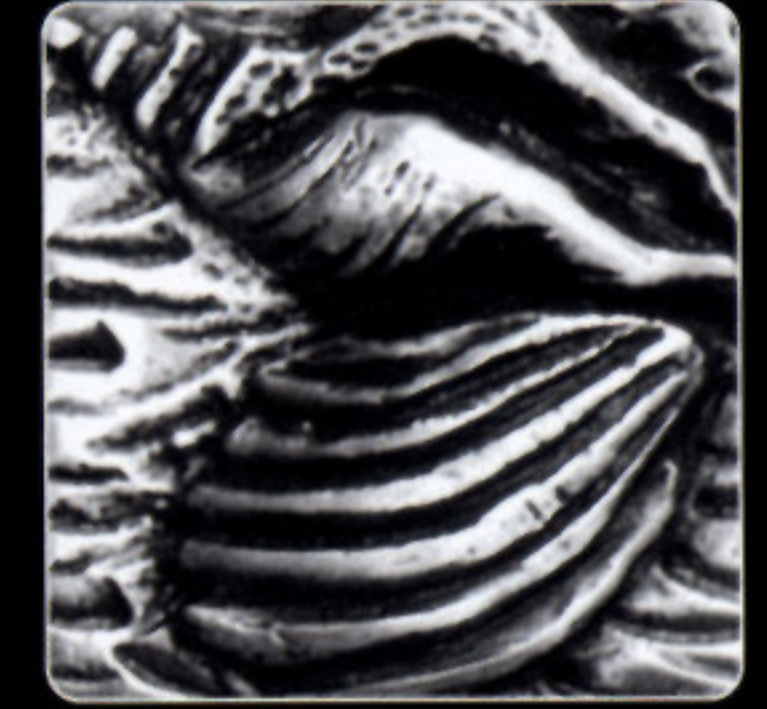
KT07



KT08



KT09



KT10



AT01



AT02



AT03



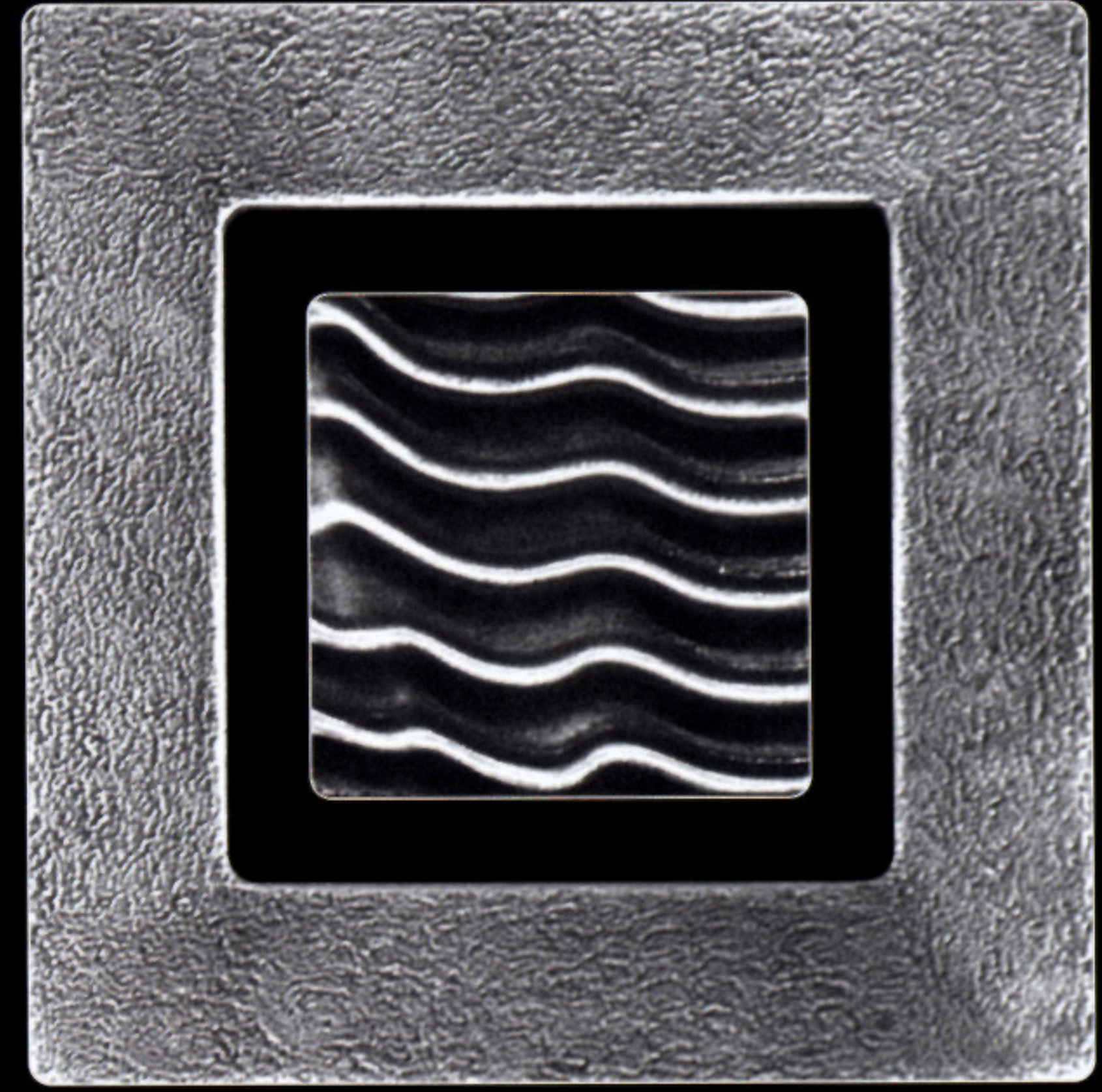
AT04



AT05



AT06



(4" Frame for any 2" Dot!) PF04 / Inset: DE11

